

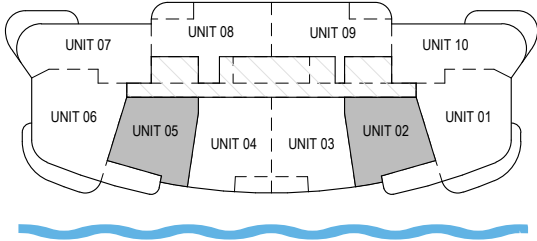


3000 WATERSIDE

**UNITS 02 & 05**  
**FLOORS 3 TO 14**





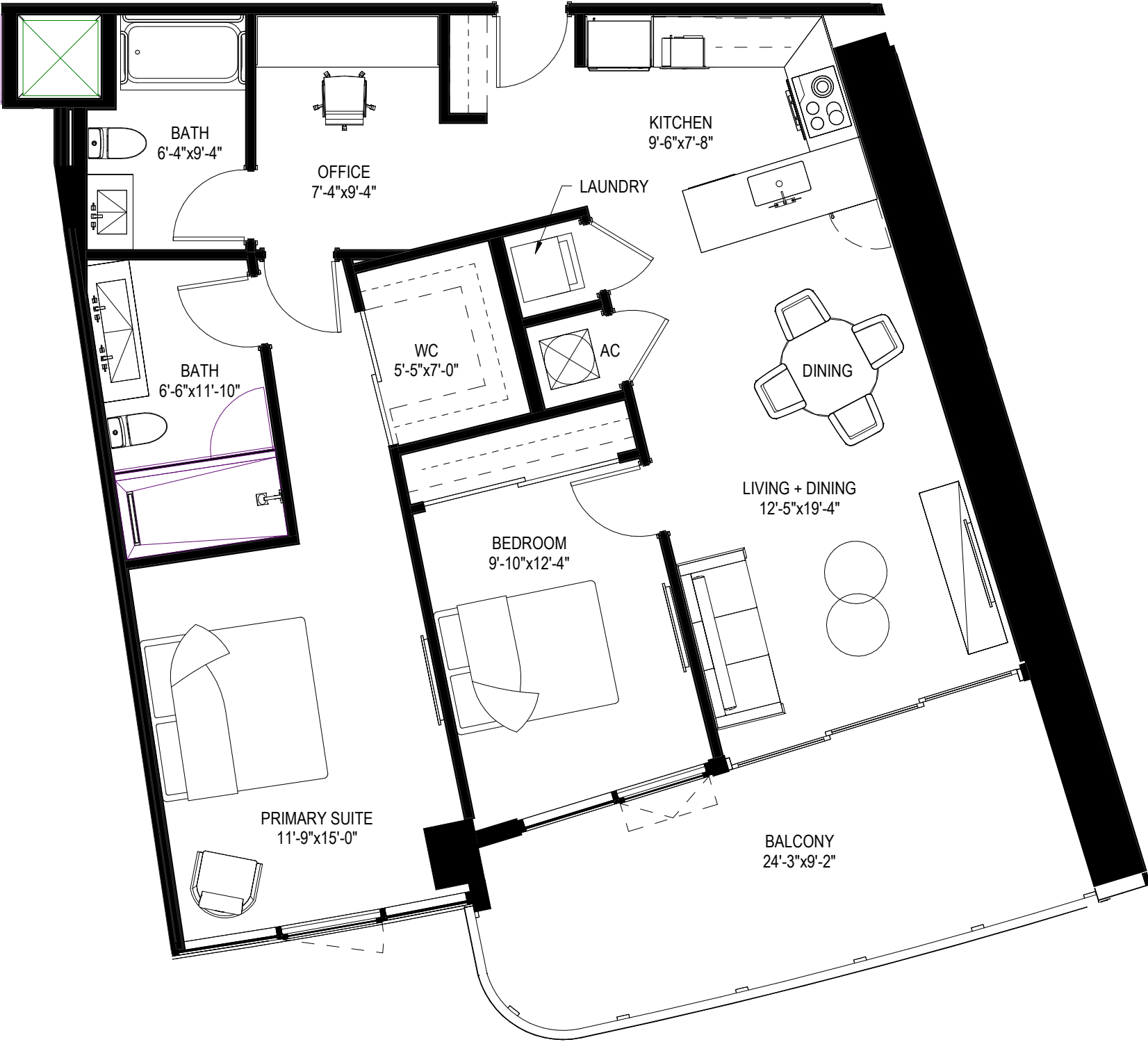


# UNITS 02 & 05 FLOORS 3 TO 14

2 Bedrooms + Den | 2 Baths

1,120 SF Interior

223 SF Balcony





3 0 0 0   W A T E R S I D E

#### SALES GALLERY

2844 East Oakland Park Boulevard, Fort Lauderdale, Florida 33306

#### SITE ADDRESS

3000 East Oakland Park Boulevard, Fort Lauderdale, Florida 33306

DEVELOPED BY:



ARCHITECT:



INTERIOR:

MANHAS DESIGN

ORAL REPRESENTATIONS CANNOT BE RELIED UPON AS CORRECTLY STATING REPRESENTATIONS OF THE DEVELOPER. FOR CORRECT REPRESENTATIONS, MAKE REFERENCE TO THIS BROCHURE AND TO THE DOCUMENTS REQUIRED BY SECTION 718.503, FLORIDA STATUTES, TO BE FURNISHED BY A DEVELOPER TO A BUYER OR LESSEE.

SKETCHES AND ILLUSTRATIONS ARE ARTIST'S RENDERINGS. DETAILS AND FIELD VARIATIONS ARE SUBJECT TO CHANGE. ALL DIMENSIONS ARE APPROXIMATE, AND ALL FLOOR PLANS AND DEVELOPMENT PLANS ARE SUBJECT TO CHANGE.

THERE ARE VARIOUS METHODS FOR CALCULATING THE TOTAL SQUARE FOOTAGE OF A CONDOMINIUM UNIT, AND DEPENDING ON THE METHOD OF CALCULATION, THE QUOTED SQUARE FOOTAGE OF A CONDOMINIUM UNIT MAY VARY BY MORE THAN A NOMINAL AMOUNT. THE DIMENSIONS STATED IN THIS BROCHURE ARE MEASURED TO THE EXTERIOR BOUNDARIES OF THE EXTERIOR WALLS AND THE CENTERLINE OF INTERIOR DEMISING WALLS AND, IN FACT, ARE LARGER THAN THE DIMENSIONS OF THE "UNIT" AS DEFINED IN THE DECLARATION OF CONDOMINIUM FOR 3000 WATERSIDE CONDOMINIUM, WHICH IS MEASURED USING INTERIOR MEASUREMENTS.

